

Community Engaged Scholarship

Heather Schacht Reisinger
ICTS Engagement,
Integration, and
Implementation Core

January 6, 2022



Overview

- 
- My background
 - Objectives
 - Definitions
 - Frameworks for engaged scholarship
 - Community-Based Participatory Research (CBPR)
 - Themes

My (neutral) background

- BA in Art and Anthropology at Luther College in Decorah, Iowa
- Masters of Applied Anthropology (MAA)
- PhD in anthropology
 - Dissertation with a young man who had gotten involved in drug dealing
- Post-doc in public health
- Faculty position in college of medicine
- Associate Director of Engagement, Integration, and Implementation at the Institute for Clinical and Translational Science (ICTS)

Why “neutral”?

Why “neutral”?

→ Community engaged scholarship is contested space

My objective(s)

- To thread the needle
 - Include my background and perspective
 - Provide concrete definitions and frameworks
- To bring as many University of Iowa faculty into community engaged scholarship as possible in a thoughtful, respectful way.



My objective(s)

- To thread the needle
 - Include my background and perspective
 - Provide concrete definitions and frameworks
- To bring as many University of Iowa faculty into community engaged scholarship as possible in a thoughtful, respectful way...

*from those with little experience
to those deeply embedded.*



The perspective I bring...

**National Center for Advancing
Translational Sciences, a National
Institutes of Health center.**

How long does it take to get research findings into routine clinical practice?

The Problem

REVIEW



The answer is 17 years, what is the question: understanding time lags in translational research

Zoë Slote Morris¹ • Steven Wooding² • Jonathan Grant²

¹Institute of Public Health, University of Cambridge, Cambridge CB2 0SR, UK

²RAND Europe, Cambridge CB4 1YG, UK

Correspondence to: Jonathan Grant. Email: jgrant@rand.org

J R Soc Med 2011; **104**: 510–520. DOI 10.1258/jrsm.2011.110180

What have our responses in the scientific community been to this time lag?

Responses

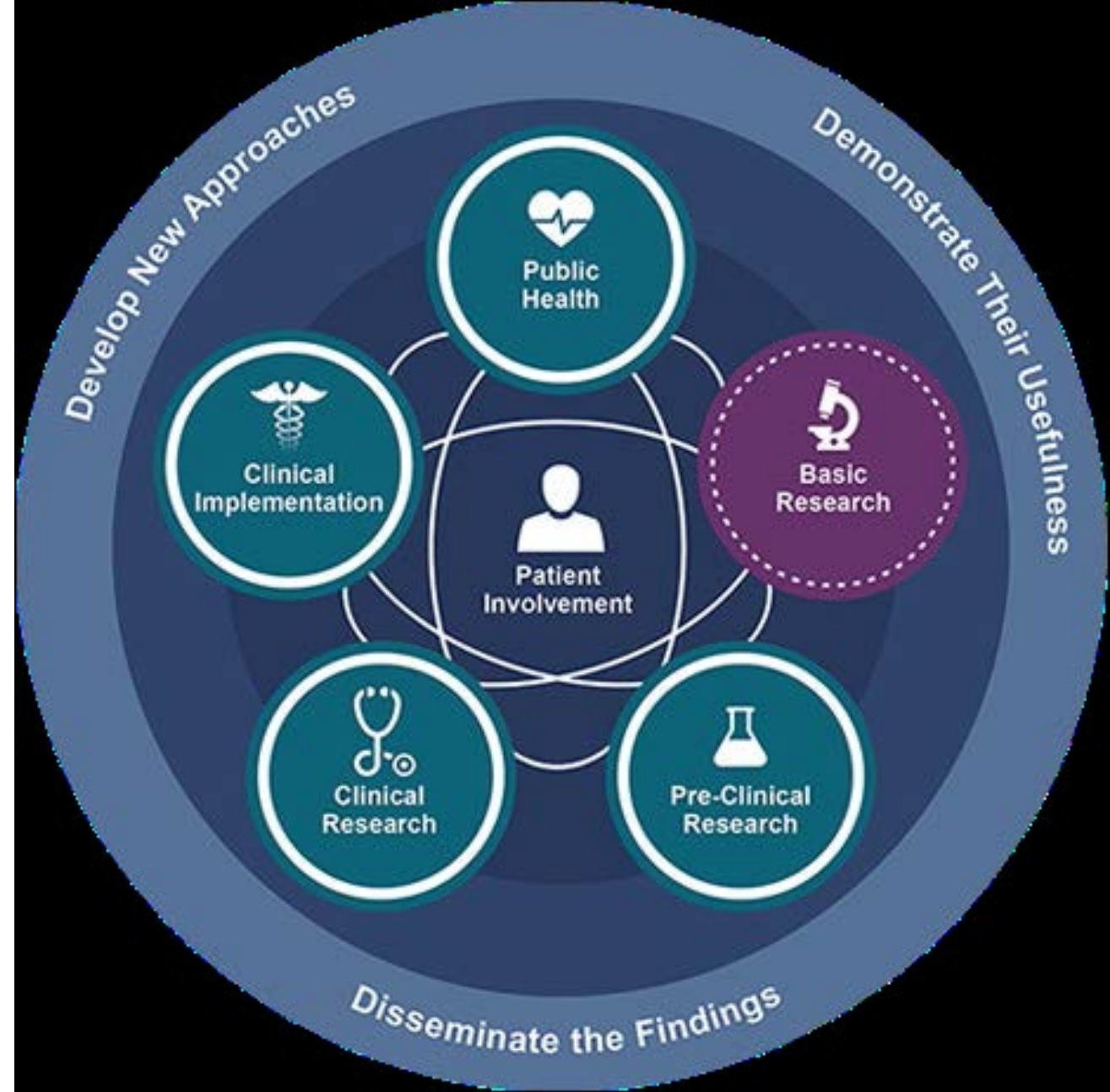
- T0-T4 Translational Science



<https://cpce.research.chop.edu/research-methods-approaches/translational-research>

Responses

- T0-T4 Translational Science
- Clinical and Translational Science Awards (CTSAs)



Responses

- T0-T4 Translational Science
- CTSAs
- “Real-World”/ Pragmatic Trials

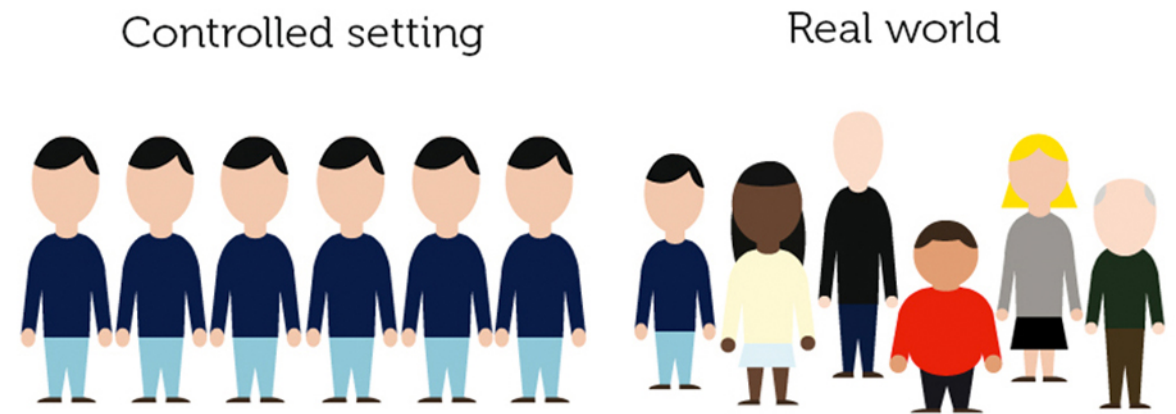


Image: <http://www.imi-getreal.eu/News/ID/87/Online-course-Real-World-Evidence-in-Medicine-Development--16-April--27-May-2018>

Responses

- T0-T4 Translational Science
- CTSAs
- “Real-World”/ Pragmatic Trials
- Implementation Science (IS)



Responses

- T0-T4 Translational Science
- CTSAs
- “Real-World”/ Pragmatic Trials
- Implementation Science (IS)
- Community- and Patient-Engaged Research



Another question to consider...

What have our responses in the
academic/scientific community been to
social inequities?

Responses to Addressing Health Disparities and Health Equity?

- T0-T4 Translational Science
- CTSAs
- “Real-World”/ Pragmatic Trials
- Implementation Science (IS)
- Community- and Patient-Engaged Research




[This Photo](#) by Unknown Author is licensed under [CC BY-NC-ND](#)

Community engaged research was developed as a method to address (health) disparities and create (health) equity.

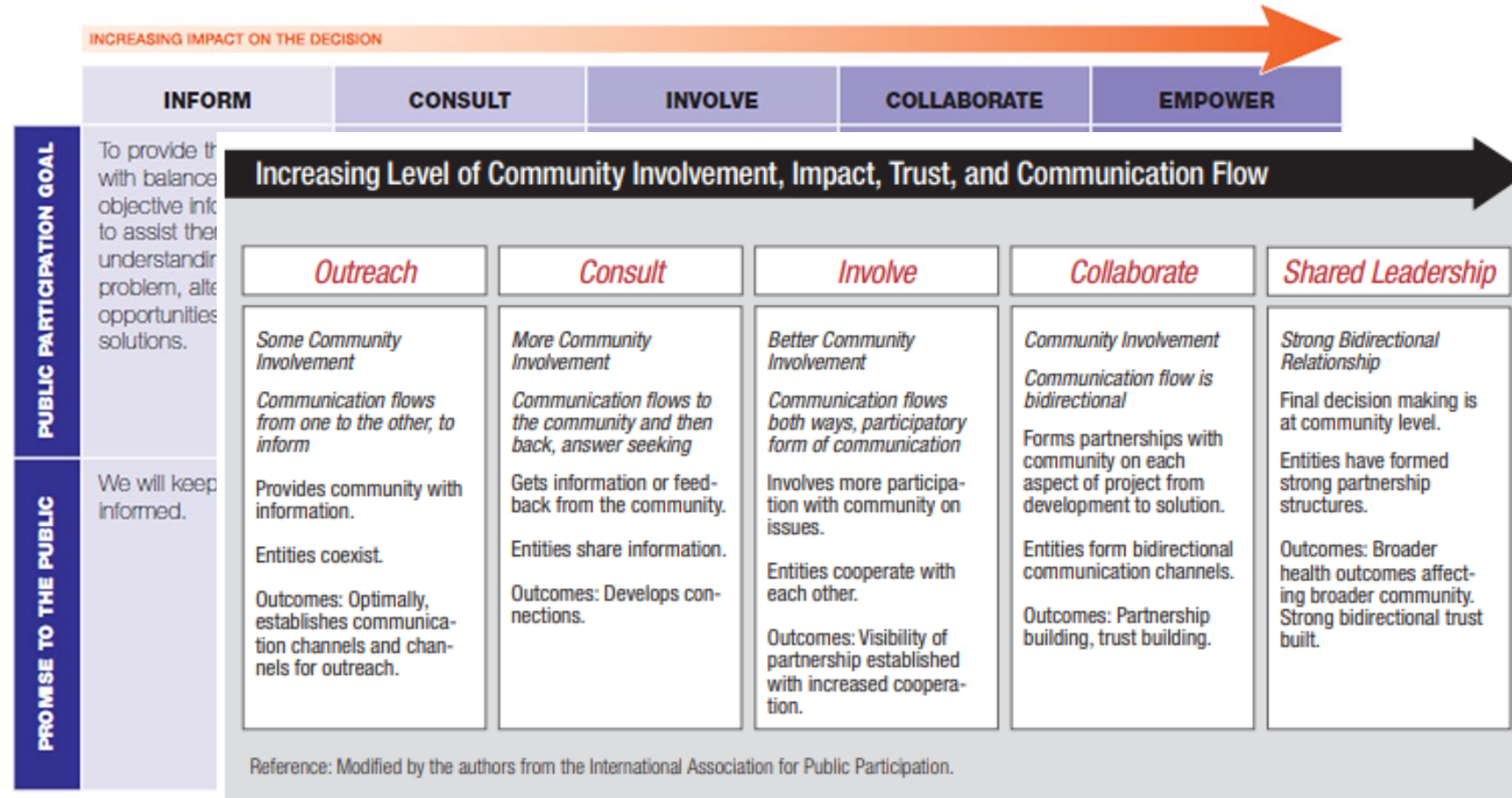
NCATS' Framing of CE research...

Public Participation Spectrum

| INCREASING IMPACT ON THE DECISION  | | | | | |
|--|--|--|---|---|--|
| | INFORM | CONSULT | INVOLVE | COLLABORATE | EMPOWER |
| PUBLIC PARTICIPATION GOAL | To provide the public with balanced and objective information to assist them in understanding the problem, alternatives, opportunities and/or solutions. | To obtain public feedback on analysis, alternatives and/or decisions. | To work directly with the public throughout the process to ensure that public concerns and aspirations are consistently understood and considered. | To partner with the public in each aspect of the decision including the development of alternatives and the identification of the preferred solution. | To place final decision making in the hands of the public. |
| PROMISE TO THE PUBLIC | We will keep you informed. | We will keep you informed, listen to and acknowledge concerns and aspirations, and provide feedback on how public input influenced the decision. | We will work with you to ensure that your concerns and aspirations are directly reflected in the alternatives developed and provide feedback on how public input influenced the decision. | We will look to you for advice and innovation in formulating solutions and incorporate your advice and recommendations into the decisions to the maximum extent possible. | We will implement what you decide. |

© IAP2 International Federation 2014. All rights reserved.

CTSA Community Engagement Continuum



McCloskey, Aguilar-Gaxiola, and CTSA Community Engagement Key Function Committee Task Force, Principles of Community Engagement, 2nd edition, 2011.

Figure 1.1. Community Engagement Continuum

Community-Engaged Research

- Gold Standard: Community-Based Participatory Research (CBPR), which is defined as...

“...a collaborative approach to research that equitably involves all partners in the research process and recognizes the unique strengths that each brings. CBPR begins with a research topic of importance to the community, has the aim of combining knowledge with action and achieving social change to improve health outcomes and eliminate health disparities.”

Israel, B., Schulz, A., **Parker, E.**, & Becker, A. (1998). Review of community based research: Assessing partnership approaches to improve public health. *Annual Review of Public Health*, 19: 173-202.

Community-Engaged Research

- Gold Standard: Community-Based Participatory Research (CBPR), which is defined as...

“...a collaborative approach to research that equitably involves all partners in the research process and recognizes the unique strengths that each brings. CBPR begins with a **research topic of importance to the community**, has the aim of combining knowledge with action and achieving social change to improve health outcomes and eliminate health disparities.”

Israel, B., Schulz, A., **Parker, E.**, & Becker, A. (1998). Review of community based research: Assessing partnership approaches to improve public health. *Annual Review of Public Health*, 19: 173-202.

What is “community”?

- Community is the unit of identity

A CBPR Definition

“community consists of emotional connections to other members, shared values and norms, mutual influence, common interests and joint commitment to shared needs; thus, community can be geographically centered such as a neighborhood or may be geographically dispersed, such as persons who share a characteristic (e.g., race or sexual identity)”

Israel BA, Eng E, Schulz AJ, Parker EA. Methods for community-based participatory research for health, 2nd edition. San Francisco: Jossey-Bass, 2013.

A NCATS Definition

Community is defined as “all stakeholders connected to clinical and translational research. Communities may include but are not limited to non-profit or industry entities engaged in translational research, and might include disease advocacy groups, local health providers, community-based organizations, and other national or local communities”

NCATS. PAR-18-464 Clinical and Translational Science Award (U54 Clinical Trial Optional). Department of Health and Human Services, 2017.

Clear challenges in my space...

- Community as unit of identity
- Common interests and shared needs vs Stakeholders
- Equity vs Evidence-based medicine into routine practice

My resolution...the Engagement, Integration, and Implementation (EII) Model and Process



Table 1. Characteristics of CBPR

Community members and researchers contribute equally and in all phases of research

Trust, collaboration, shared decision making, and shared ownership of the research; findings and knowledge benefit all partners

Researchers and community members recognize each other's expertise in bidirectional, colearning process

Balance rigorous research and tangible community action

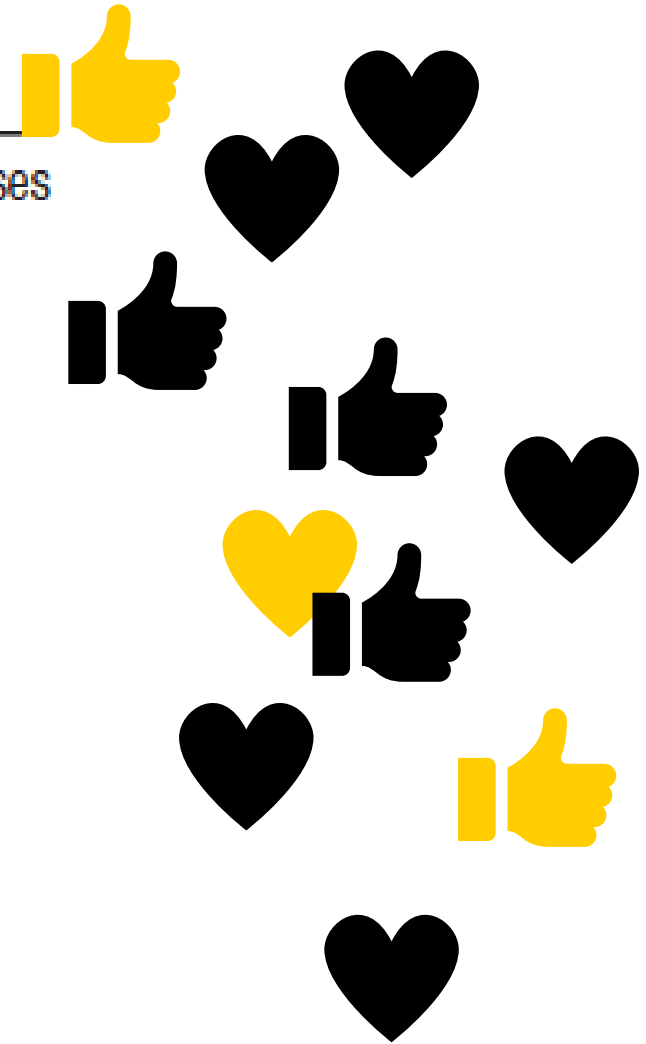
Embrace skills, strengths, resources, and assets of local individuals and organizations

Community recognized as a unit of identity

Emphasis on multiple determinants of health

Partners commit to long-term research relationships

Core elements include local capacity building, systems development, empowerment, and sustainability



Horowitz CR, Robinson M, Seifer S, Circulation, 2009; 119.

Summarizing themes





Iowa Trivia

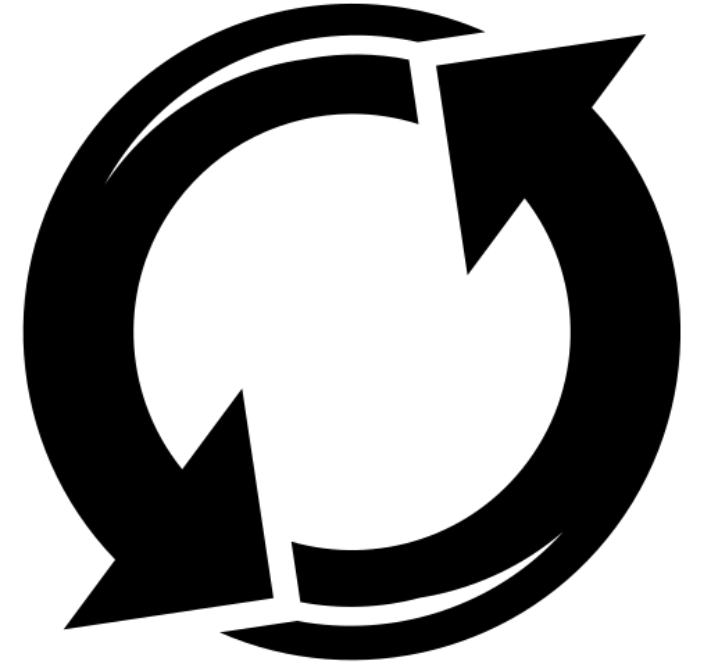
Who knows what painting this is and the story behind it?



Grant Wood, *Young Corn*, 1931, oil on Masonite panel, 24 x 29 7/8 in., collection of the Cedar Rapids Community School District, on loan to the Cedar Rapids Museum of Art.

Thank you!!!

- Would love your feedback.
- Also, would like to acknowledge the intellectual influence and support from Edith Parker and Paul Gilbert.





Questions and conversation

[This Photo](#) by Unknown Author is licensed under [CC BY-NC](#)